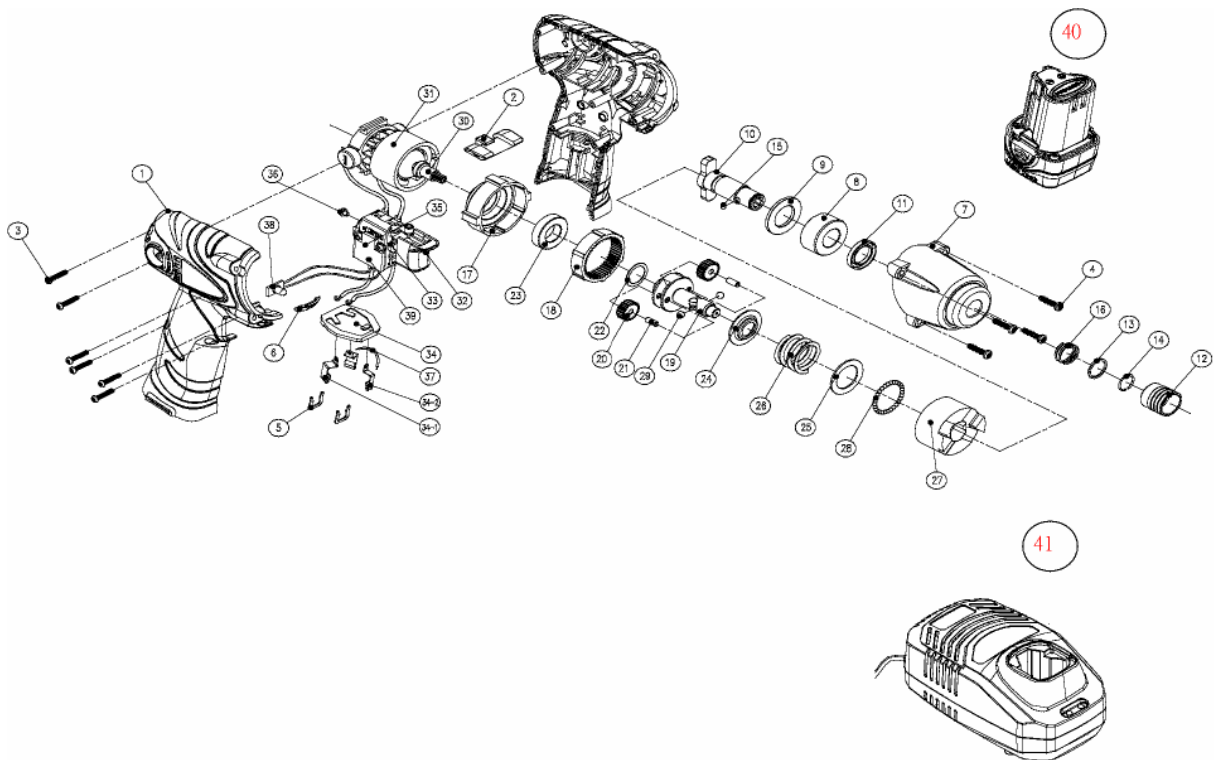


Nur für Reparaturwerkstätten und Elektrofachkräfte
 Only for specialized electrical personnel and repair-shops
 Uniquement pour les ateliers de réparation et les électriciens qualifiés
 Sólo para talleres de reparación y electricistas

FLEX

D-71711 Steinheim/Murr – Tel.(07144) 828-0 – Telefax (07144) 25899

ALi 10,8 S US version



Pos.	FLEX - Nr.	Description
1	342.335	Enclosure
2	337.331	Reversing actuator
3	337.471	Enclosure screw
4	337.498	Front base screw
5	337.358	Clip
6	337.463	LED cover
7-16	337.439	Front base assembly
17-29	337.447	Hammer gear box assembly
30-31	337.455	Motor assembly
32-39	337.390	Switch assembly
40	341.517	Battery pack
41	341.525	Charger
	341.010	Carbon brush

02/07
 Änderungen vorbehalten
 Modifications reserved
 Modifications reserves
 Salvo modificaciones